



It's never too early to protect your drinking water!

For questions on the SWPTAP program, contact your PADEP Regional Office representative:

NORTHCENTRAL REGION OFFICE, Williamsport
Mark Stephens, PG
P. 570.327.3422
mstephens@pa.gov

SOUTHCENTRAL REGION OFFICE, Harrisburg
Catherine Port
P. 717.705.4913
cport@pa.gov

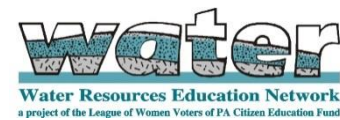
NORTHEAST REGION OFFICE, Wilkes-Barre
Andrew Augustine
P. 570.830.3101
aaugustine@pa.gov

SOUTHEAST REGION OFFICE, Norristown
Kevin Smith
P. 484.250.5131
kevins@pa.gov

NORTHWEST REGION OFFICE, Meadville
Chris Berkey
P. 814.332-6410
chberkey@pa.gov

SOUTHWEST REGION OFFICE, Pittsburgh
Tom McCaffrey
P. 412.442.4212
tmccaffrey@pa.gov

Source Water Protection Partners:



WATER RESOURCES EDUCATION NETWORK (WREN)
A project of the League of Women Voters of PA Education Fund
Julie Kollar
juliekwren@verizon.net
P. 267.468.0555
www.sourcewaterpa.org

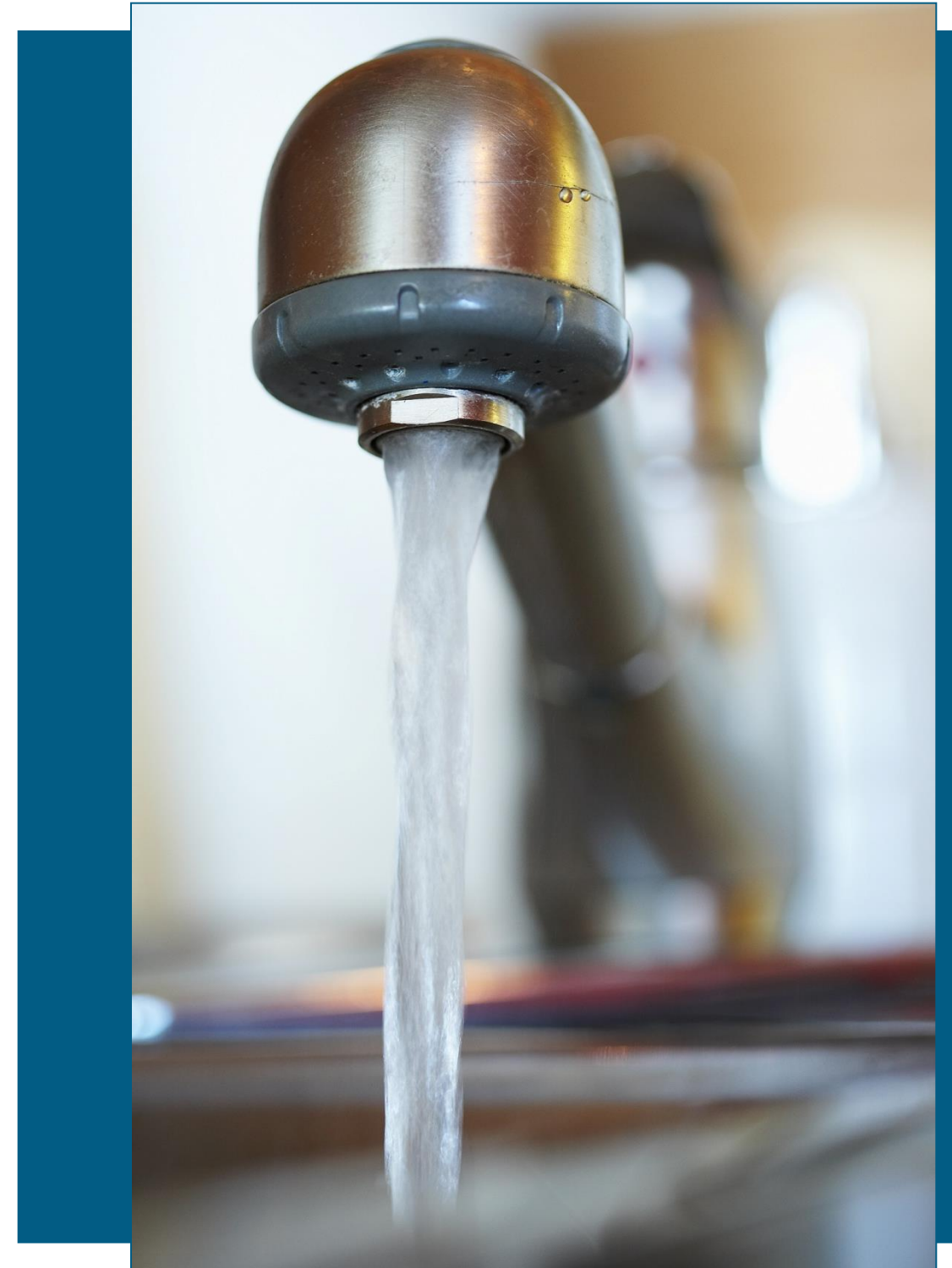


PA RURAL WATER ASSOCIATION (PRWA)
Matt Genchur
P. 814.353.9302
mgenchur@prwa.com
www.prwa.com



SSM GROUP, INC.
Eric Grindrod, PG
P. 610.621.2000
eric.grindrod@ssmgroup.com
www.ssmgroup.com

Source Water Protection Technical Assistance Program



Protecting Our Water Supplies



What is *SWPTAP*?

The **Source Water Protection Technical Assistance Program** (SWPTAP) is administered by the Pennsylvania Department of Environmental Protection (DEP) to help community water systems protect their drinking water. It is a voluntary program that benefits water systems with groundwater wells, springs, reservoirs, surface water intakes, or any combination of these sources. All types of community water systems are eligible to participate in SWPTAP, including municipalities, authorities, water associations, and investor-owned (private) systems throughout the Commonwealth. The DEP works with SSM Group, Inc., an engineering and environmental services company, to provide the technical assistance needed to develop a Source Water Protection Plan at no cost to the water system. Our team of professionals will work with each water system to develop protection options tailored to each community's needs.



Protecting the water for future generations.

Where does your water come from?

Before you can protect your drinking water, you need to know how water flows to your wells, springs, and intakes. The first step in developing a Source Water Protection Plan is identifying the source area for the water supply. Our geologists will delineate protective areas around each water source to show the areas that contribute to the drinking water supply. The SWPTAP team then works closely with the supplier and other partners to identify potential threats to the water and develop options to reduce these concerns. A sustainable plan is then presented to the water system to continue with proactive management strategies.

Why is source water protection important?



public health protection

Source water protection helps minimize threats to public health by keeping harmful contaminants out of the water supply.



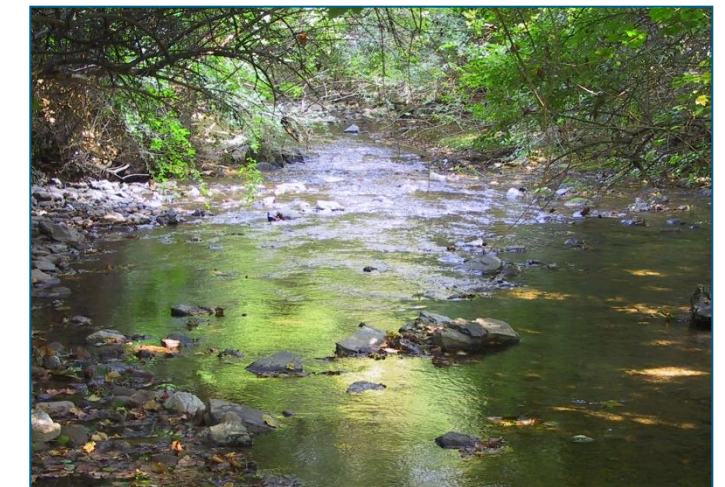
reduced treatment costs

Clean water is less expensive to treat, and reduces system operation and maintenance costs.



economic benefits

Clean and plentiful water enhances your community's potential to attract employers, maintain a healthy economy, and possibly enjoy the benefits of tourism.



environmental stewardship

Protecting water resources will sustain native ecosystems and improve the quality of life for future generations.